

Hitachi-Maxco – Environmental Products – Waste Water

Hitachi Maxco UHMW-PE Sprockets offer several advantages over other sprocket material including outstanding wear characteristics (ASTM G65) and chemical stability.

UHMW Sprockets are available for use as drive or idler sprockets and for stub shaft service as well. Every HMAX 720 Style Sprocket is configured with the hunting tooth pattern also known as "double-life" tooth profile. UHMW Sprockets are ideal for use with Cast Nylon Stub Shafts (shown at right) a winning combination of high strength nylon with the proven durability of UHMW for all idler shaft requirements.

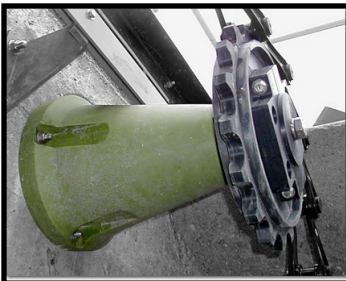
Hitachi Maxco 720 UHMW Sprockets have typical bore range of 1-15/16" to 4-15/16". Other sizes are available.

78 series UHMW / UHMW Combo Drive and Driven sprockets with replaceable tooth segments offers a low cost, easy to maintain alternative to cast or metallic sprocket styles.

Hitachi Maxco UHMW-PE sprockets are available with or without chain saver rims.



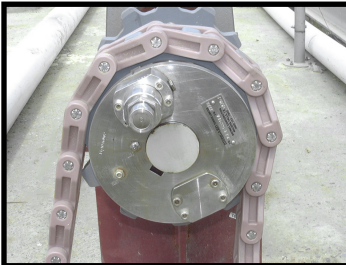
Cast Nylon Stub Shafts provide extremely low friction bearings for both new and existing clarifier requirements. Heavy steel shafts and metallic wall bearings are by their material prone to corrosion which hampers the articulation of the clarifier. Most steel shaft and wall bearing clarifiers use more horsepower to articulate the collector chains due to this high friction penalty when compared to the actual load of the sludge. Cast Nylon Stub Shafts with free turning sprockets remove this penalty, extending the life of the chain and components by years. Even after years of heavy use, sprockets on Cast Nylon Stub Shafts continue to turn easily.



Bibbigard Torque Limiters feature Stainless Steel construction providing years of steadfast service and reliability. Replaces existing standard shear pin sprocket arrangements without any modifications.

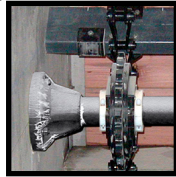
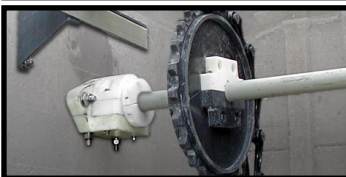
Available either pre-set (non-adjustable) or adjustable.

Simply dial-in the torque level required and the assembly is ready for use.



HMAX Non-Metallic Wall Bearings feature a body of Cast Nylon, designed for high load applications, coupled with a UHMW Bearing for ultimate low friction attainment. Optional Shaft Protector for added resistance to high grit or load requirements.

Also shown is a **Static Sleeve Bearing on Idler Shaft**



Hitachi Maxco's latest generation of **non-metallic 6" pitch collector chain** features many enhancements to insure a long productive life in a wide range of applications and service conditions. Manufactured of Acetal Resin, the chain link has a smooth finish with a very generous cross-section. The pin press-fits into the sidebar with a "T" head interlocking arrangement and is secured without the use of pins or cotters.



Snap Idler Tensioner, is the quickest and easiest drive chain tensioner to install on the market today. Simply mount the free-floating assembly around the drive chain strand and using the adjustable side plates reduce slack in the chain to the optimum location. The Snap Idler assembly does not require any anchor bolts to locate and place, and can be used with a wide variety of chain types.

