

*Providing the best in quality and customer service  
since 1952*



## Thermal Imaging using our Flir P45 HSV Camera



Hey there I'm Eddie Garland and I would like you to check out our Onsite Thermal Monitoring Service of your plant electrical equipment. I have been in the electric motor business for over 30 years and this service will show you things that it would be very hard to find out otherwise.

As part of this service I will come to your plant and between us we will decide on a route for equipment measurements that I shall make and then I will do my job with my trusty Flir camera and take a Thermal and a Regular Photograph of each piece of equipment that looks to me as needing attention.

After the route of equipment checks has been done I will return to our shop and fill out and complete a report with summary showing the route I took , with equipment identifications on it .

As part of the report you will get a copy of the 2 pictures for each problem area found in the measurement phase of the onsite service ([similar to the extract over....](#))

### Why We Offer Thermal Imaging For Your Plant Electrical System

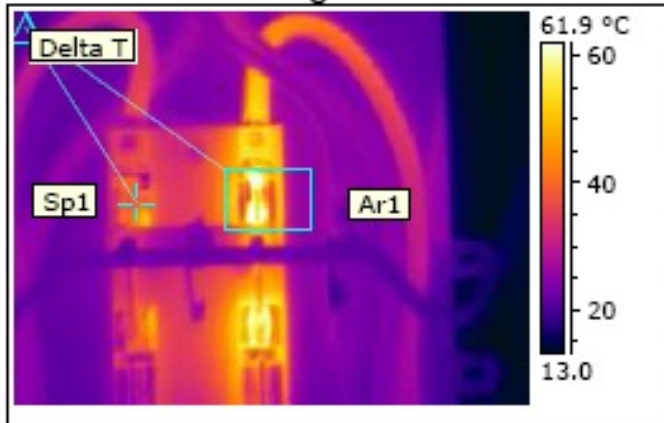
1. All electrical systems, equipment and components deteriorate over time.
2. Poor electrical connections result in a high resistance across the connection, with a resultant rise in temperature. Overheating can occur, which can lead to equipment and component failure.
3. In extreme circumstances this failure can result in fire and possible explosion.
4. Excessive loading of electrical systems and equipment or phase imbalance can be quickly diagnosed.
5. The deterioration of electrical systems and equipment is not always known or detected by conventional checks but these faults can become clearly visible with the aid of thermal imaging techniques.

**The bottom line is that it just makes common sense to use this tool  
and enjoy the benefits that come from it.**

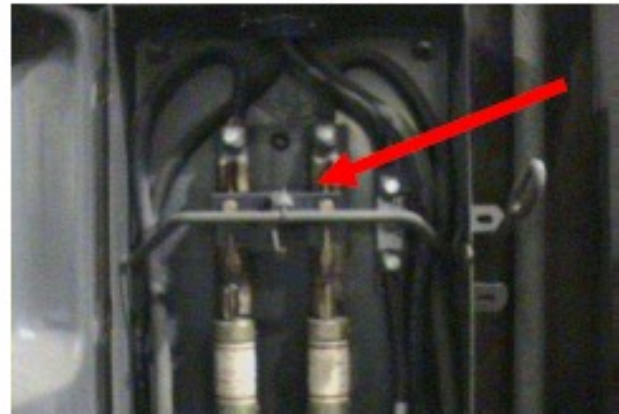
*We are available 24/7/365 to meet your needs*

Holland Industrial, 518 West Montgomery Street, Henderson, NC., 27536  
Tel: 1-800-232-7541, Fax 1-252-492-2444, E-Mail: sales @ hollandindustrial.com

Thermogram



Photo



Ar1 Max. Temperature 73.6 °C  
Sp1 Temperature 37.0 °C  
Delta T Value 36.5

*L2 on fuse knife blade (What)*  
*Wire Bound Shop Disconnect (Where)*

**Analysis and recommended actions:**

This fault appears to be that the connection of the knife blade on the fuse holder has become dirty, pitted or loose. Inspect the knife blades and clips and clean and tighten as needed.

Image Date 11/29/2011  
Image Camera Type P45 HSV NTSC  
Object Distance 0.9 m  
Emissivity 0.94