

ELECTRONIC REPAIR

Electronic Test Stations

Here are just a few of the different electronic systems available to test individual controls:

- Allen Bradley PLC1 through PLC5 test systems, SLC500, SLC150, Controllogix, Micrologix, Flex I/O
- Allen Bradley 7300, AB 1398, G & L Centurion, Electrocraft
- Allen Bradley 1394 Digital Servo Drive, Ultra
- Atlas Copco - Powerfocus 300, Tensor S series & DS Series
- Banner
- Cincinnati Milacron APC500 (Acromatic programmable control)
- Barber Colman and Maco 4,400, 4000, 4500, 8000
- Baumuller BUG, BUM Series Drives
- Dolan-Jenner
- Fanuc System 18 NC
- General Electric series 1, 3, 5, 6, 90/30 and 1050
- General Electric DC 300
- Hitachi H series
- Ingersol Rand
- Jetter Drives and Controllers
- Koyo Kostac S-Series System
- Lincoln Electric Powerwave 450 / w/RJ2 Fanuc weldcell
- Lytron Tester
- Medar 500S Weld System
- Mitsubishi A1N series, A1S series, and K3 series
- Modicon Micro 84, 184, 284, 384, 484, 584, 884, 984 systems, also Quantum series
- Omron C200H series, CQM1 series
- PinPoint II System
- Siemens S7, S5-100U, S5-115U
- Siemens Simoreg 610
- Siemens Simodrive 610 Drive System
- Square D Spot Welder
- Square D 8030 series

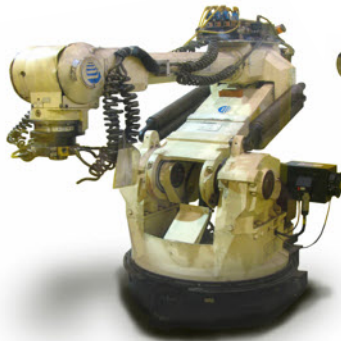


- Stanley Q1001 and controllers
- STI
- Sy/Max Square D
- TechMotive CS1000
- Telesis PinStamp
- Texas Instruments 520, 500, 505, and 5T1
- Ulicor 4001 series
- Yaskawa Axis/Spindle Drive
- 400 Hertz Spindle Motors for High Speed Spindle Drives
- 15 HP, 25 and 75 HP Dyno for Testing AC and DC Drives (up to 200 HP)



Robotics

- ABB 1400 IRBS4C Robot
- ABB RID600 M93 Robot
- ABB S4P Paint Robot
- Comau Smart 3 Series 675
- Comau MicroBot C3G
- Fanuc M16 RJ3 Robot
- Fanuc S10 Robot RJ2 LRMate
- Fanuc RJ2 ArcMate/ABB S3
- Fanuc RJ420F
- Fanuc P150
- Kuka KC1 Robot
- Kuka KR150
- Motoman ERC, MRC & XRC



5775 Ten Mile Road
Warren, MI 48091
phone: (800) 229-5350
fax: (800) 229-5375
www.paragontech.com



1100 South Service Rd #103
Stoney Creek, ON, CN. L8E 0C5
phone: (800) 567-3786
fax: (800) 229-5375
www.paragoncanada.ca



2919 Interstate Street
Charlotte, NC 28208
phone: (800) 756-9150
fax: (800) 229-5375
www.paragontatlantic.com



82 Corporate Park Dr.
Henderson, NV 89074
phone: (800) 756-9160
fax: (800) 229-5375
www.paragonpacific.net



Paragon repairs electronic components from thousands of manufacturers every day.
If you don't see a specific manufacturer, please call our knowledgeable customer service staff.

FEATURING. . .



Allen Bradley



Barber Colman



Baldor



Fanuc



General Electric



Indramat



Modicon



Reliance



Square D



Siemens



Toshiba



Yaskawa



ABB
ABB ROBOTICS
AC TECHNOLOGY
ACCU-CODER
ACDC ELECTRONICS
ACROMAG
ACROMARK
ADEPT
ADGO
ALLEN BRADLEY
ALLIED TELESIS
ALLIS-CHALMERS
AMERICAN SIGMA
AMERICAN STANDARD
AMETEK
AMK
AMPROBE
ASI ROBOT
ASI SYSTEM
ATHENA
ATLAS
ATLAS COPCO
AUTOMATIC ELECTRIC
AUTOMATRON
AYDIN CONTROLS
B&K
BABBITT
BABCOCK
BACHMAN ELECTRONIC
BADGER
BALDOR
BALLUFF
BARBER COLMAN
BARCO AUTOMATION
BATTENFELD
BAUMULLER
BBC-BROWN BOVERI
BEI
BEI ELECTRONICS
BENSHAW
BINDICATOR
BODINE ELECTRIC
BORG WARNER

BOSCH
BRANDT
BRIDGEPORT
BRISTOL BABCOCK
BROWN & SHARPE
BROWN SOVERI
BUEHLER
CAL CONTROLS
CEG AUTOMATION
CHROMALOX
CINCINNATI
CINCINNATI MILACRON
CLEVELAND MACHINE
CLEVELAND MOTOR
CMC
COMPAQ
COMPTROL
COMPUMOTOR
CONAIR
CONTRAVES
CONTROL CHEIF CORP
CONTROL LOGIC
CONTROL SYSTEMS
CONTROL TECHNIQUES
CONVERTER CONCEPTS
CSR CONTRAVES
CURTIS INSTRUMENTS
CURTIS INDUSTRIES
CUTLER HAMMER
DAIWA
DAKTRONICS INC
DANFOSS
DATA TECH
DAYTON
DAYTRONIC
DELANVAN
DELCO PRODUCTS
DME
DOHRMANN
DOLAN JENNER
DRIVECON
DUKANE
DURANT
DYNAMATIC
DYNAPAR
DYNAPOWER
DYNAPRO
EDC
EAGLE

EATON IDT
EATON KENWAY
EATON LEONARD
EKF ELEKTRONIK
ELECTRO-CRAFT
ELECTRO-MATIC
ELECTROMATIC
EMC CONTROLS INC
EMC MONITOR
ENERPAC
EPCO
EPIC PRODUCTS
EUROTHERM
FAGOR
FANUC
FARGO
FAST HEAT
FENCO
FENNER
FENWAL
FESTO
FINCOR
FIREYE
FISHER CONTROLS
FISHER-ROSEMONT
FUJI ELECTRIC
FUJITSU
FURNAS
FUTABA CORP
GAI-TRONICS
GAIL MOTION CONTROL
GAMAFLUX
GASTON COUNTY
GEC INDUSTRIAL
GEC-ALSTHOM
GEMCO
GENERAL ELECTRIC
GENICO
GENICOM
GETTYS
GIDDINGS & LEWIS
GLENTEK
GMF
GMF ROBOTIC
GORDINIER
GORDON ENG
GORMAN-RUPI
GOULD MODICON
GRACO

GRASEBY CONTROLS
GRASEBY-VOLKMANN
GUARDSCAN
HAGGLUNDS DENISON
HEIDELBERG
HEIDELBERG HARRIS
HEIDENHAIN
HELLER
HELM INSTRUMENT
HERR-VOSS
HITACHI
HITACHI-SEIKI
HOFFMAN CONTROLS
HONEYWELL
HONEYWELL-ISSC
HONEYWELL LUCIFER
HUNKAR LABS
HURLTRON
HYUNDAI
INDRAMAT
INDUCTOHEAT
INGERSOLL-RAND
INLAND MOTOR
ISB
ISI ROBOTICS
KAWASAKI
KB ELECTRONICS
KEB
KEB COMBIVERT
KEBA
KOLLMORGAN
KRAUSS-MAFFEI
KRISTEL CORPORATION
KUHNKE
KUKA
KURODA
LAMBDA
LEEDS & NORTHRUP
LEESON
LH RESEARCH
LINCOLN ELECTRIC
LION CONTROLS
LOUIS ALLIS
LOVE CONTROLS
LUST ELECTRONIC
MAGNAFLUX
MAGNETEK
MAKINO
MANNESMANN DEMAG

MANNESMANN REXROTH
MAPLE SYSTEMS INC
MARATHON ELECTRONICS
MARPOSS
MATSHUITA
MAVILOR MOTORS
MAZAK
MCC ELECTRONICS
MEDAR
MEIKI
METTLER-TOLEDO
MIKI PULLEY
MIKRON
MINARIK
MINSTER
MITSUBISHI
MIYACHI
MODICON
MOKON
MORI SEIKI
NACHI
NIPPON ELECTRIC
NOVATEC
NOVOTECHNIK
OKUMA
OMRON
ONO SOKKI
OPTO 22
ORIENTAL MOTORS
ORMEC
PACIFIC SCIENTIFIC
PANASONIC
PARTLOW
PARVUS
PAYNE ENGINEERING
PEGASUS
PEPPERL & FUCHS
PHOENIX CONTACT
PLC DIRECT
PMI MOTION
POWERS
POWERTEC
RAMCO
RED LION
REGLOPLAS
RELIANCE
REXROTH
RIMROCK
ROBICON

SAFTRONICS
SANYO
SANYO DENKI
SIEMENS
SEIDEL
SERVO DYNAMICS
SEW-EURODRIVE
SHINDENGEN
SIEB & MEYER
SIEMENS
SQUARE D
SSD
STAR AUTOMATION
STAR SEIKI
STEGMANN
STERL-TRONIC
STERLCO
STI
STROMAG
SUMITOMO
T & R ELECTRONIC
TEMEMOTIVE
TEMPOSONICS
TEXAS INSTRUMENTS
THERMAL CARE
TOEI ELECTRIC
TOSHIBA
TOTAL CONTROL
TOYODA
TRIAD CONTROLS
UNICO
UNIVERSAL DYNAMICS
UTICOR
VICKERS
VOLKMANN
WARNER & SWASEY
WATLOW
WESTAMP
WESTINGHOUSE
WHEDCO
YAMATAKE-
HONEYWELL
YASKAWA
YOKOGAWA
ZEBOTRONICS
ZYTRON

Contact: Call or email the Customer Service office nearest you 24 hours a day. With a few simple questions we can begin the process of completing your repair or replacement. You can also fill out an on-line form on any of our web sites that is forwarded directly to our Customer Service department. If we can exchange controls a quote is generated immediately.

Ship: Send the repair in for service, or if a local sales office is nearby it may be quicker for us to come and pick up the item. If not, we can help you find the best method to get the repair into the right Paragon facility.

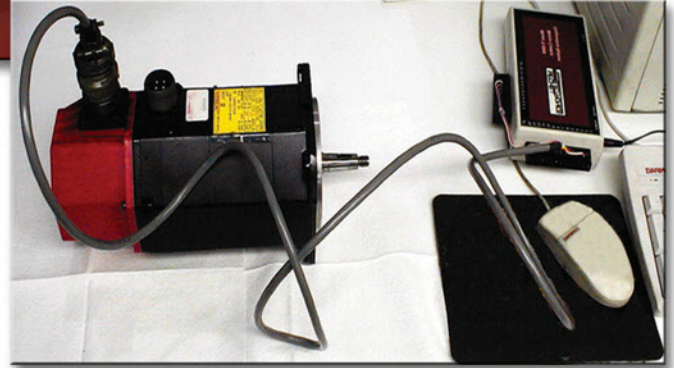
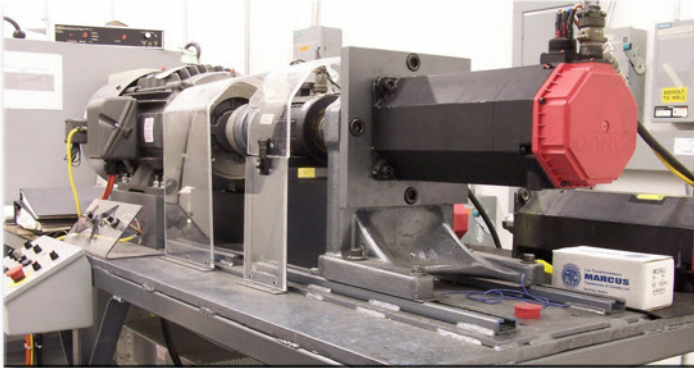
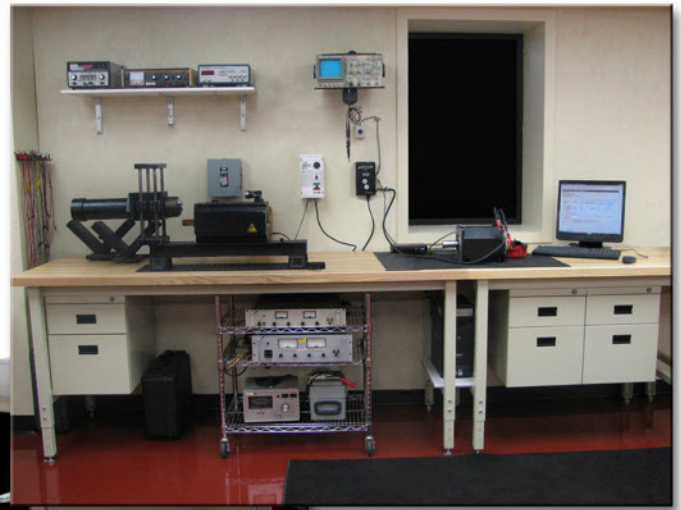
Evaluation: Once logged into our system with a "lifetime" ID number, your product moves to the appropriate department for initial evaluation and quoting of the repair.

Quote/Approval: A cost quote for the repair is generated instantly and sent to you via the Internet or by fax. You can approve the repair by email, fax, or a call to customer service along with your company purchase order number or credit card.

Repair/Return: Once your product is repaired and tested, it is foam packaged and/or static bagged and returned via the method you designate, expedited or regular ground.

Invoicing: If credit is established, the invoice is generated the following day or your company credit card is billed. Open credit terms are net 30 with 1% discount at 10 days.

SERVO MOTOR REPAIR



PROCEDURES FOR SERVO MOTOR REPAIR

- Hypot and Megohm test the winding for shorts to ground during run-in and run-out
- Verify magnet strength & shorts between phases with back EMF testing
- Recondition or rewind windings
- Replace bearings and seals when needed
- Replace machine pilot, shaft and mounting area if needed
- Replaced damaged connections
- Verify encoder operation with custom software design to check optics, processor and communication signals
- Run on system drive
- Paint



5775 Ten Mile Road
Warren, MI 48091
phone: (800) 229-5350
fax: (800) 229-5375
www.paragontech.com



1100 South Service Rd #103
Stoney Creek, ON., CN. L8E 0C5
phone: (800) 567-3786
fax: (800) 229-5375
www.paragoncanada.ca



2919 Interstate Street
Charlotte, NC 28208
phone: (800) 756-9150
fax: (800) 229-5375
www.paragonatlantic.com



82 Corporate Park Dr.
Henderson, NV 89074
phone: (800) 756-9160
fax: (800) 229-5375
www.paragonpacific.net





AC SERVO MOTORS

AC SPINDLE MOTORS

DC SERVO MOTORS



Giddings & Lewis

Hauser



ABB Robotics



Allen Bradley



Baldor

Baumuller

Indramat

Kollmorgen

Mitsubishi

Modicon



Moog

Otto Bartholdi

Pacific Scientific

Panasonic

Sanyo Denki

SEM

Siemens

Yaskawa



Cincinnati
Milacron

Cleveland Motor

Control System
Research

Electrocraft

Emerson



Fanuc

Getty's



Allen Bradley

Bailey

Baldor

Cincinnati

Contraves

Control
Technology

GE Fanuc

Getty's

Indramat

Mark 2

Milacron

Mitsubishi

Setco

Siemens



AEG

ABB Robotics

Allen Bradley

Baldor

Bosch

Cincinnati

Milacron

Cleveland Motor

Danaher

Eberhard

EG&G Torque

Electrocraft

Emerson

Fanuc

Ferite

Getty's

Gould

Indramat

Inland

Kollmorgen

Lenze

Magnetek

Mavilor

Nikki Denso

Pacific Scientific

Parvex

Peerless-Winsmith

Porter

Powertron

SEM

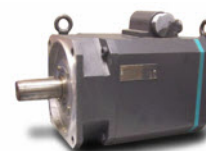
Siemens

Socapel

Winsmith

Yaskawa

Zumbach



Contact: Call or email the Customer Service office nearest you 24 hours a day. With a few simple questions we can begin the process of completing your repair or replacement. You can also fill out an on-line form on any of our web sites that is forwarded directly to our Customer Service department. If we can exchange controls a quote is generated immediately.

Ship: Send the repair in for service, or if a local sales office is nearby it may be quicker for us to come and pick up the item. If not, we can help you find the best method to get the repair into the right Paragon facility.

Evaluation: Once logged into our system with a "lifetime" ID number, your product moves to the appropriate department for initial evaluation and quoting of the repair.

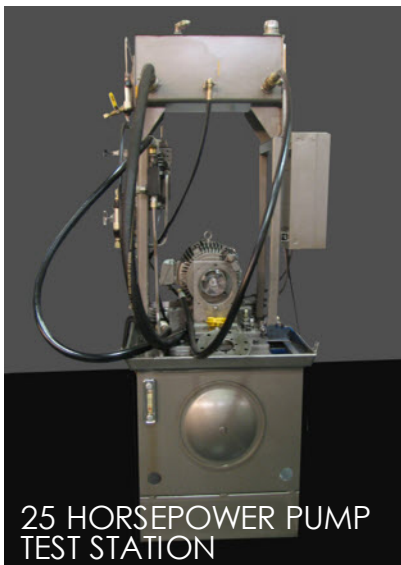
Quote/Approval: A cost quote for the repair is generated instantly and sent to you via the Internet or by fax. You can approve the repair by email, fax, or a call to customer service along with your company purchase order number or credit card.

Repair/Return: Once your product is repaired and tested, it is foam packaged and/or static bagged and returned via the method you designate, expedited or regular ground.

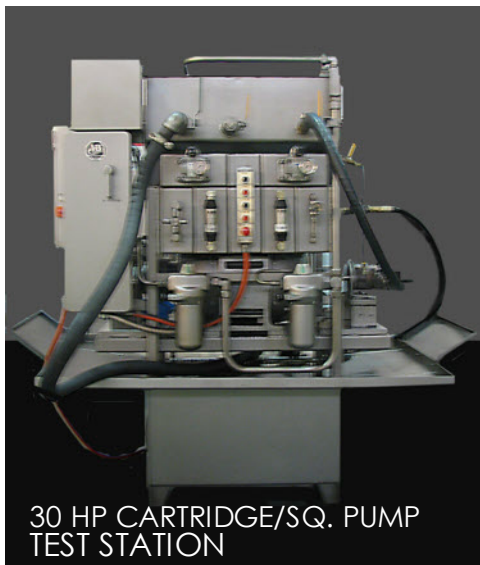
Invoicing: If credit is established, the invoice is generated the following day or your company credit card is billed. Open credit terms are net 30 with 1% discount at 10 days.

HYDRAULIC REPAIR

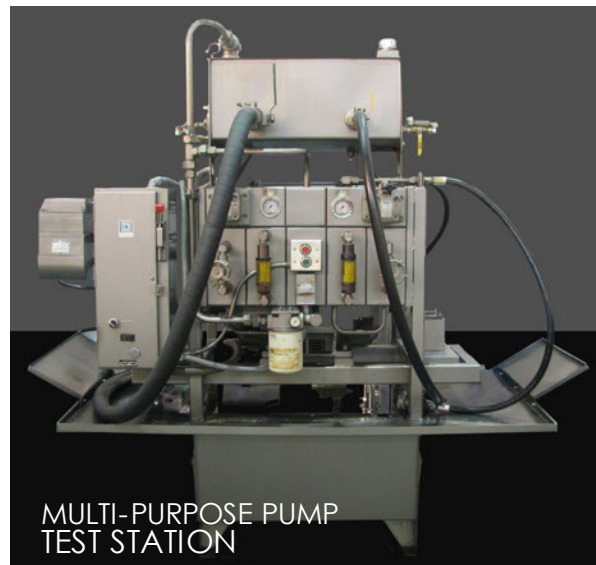
Testing on the finest test stands in the industry. Here is just a small example of the state-of-the-art equipment we use.



25 HORSEPOWER PUMP
TEST STATION



30 HP CARTRIDGE/SQ. PUMP
TEST STATION



MULTI-PURPOSE PUMP
TEST STATION



100 HP PUMP
TEST STATION



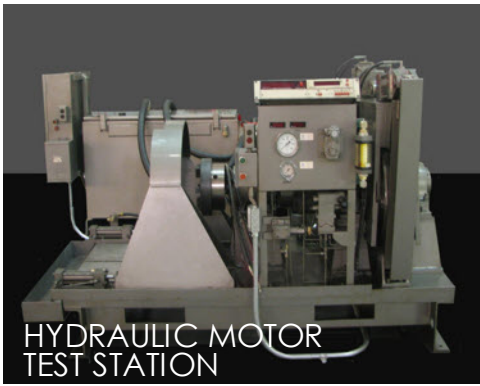
MULTI-PURPOSE VALVE
TEST STATION



MOTOR/CYLINDER
TEST STATION



RACINE
TEST STATION



HYDRAULIC MOTOR
TEST STATION



At Paragon, all hydraulic components are tested to within 100% of the rated flows and pressures for new set down by the original equipment manufacturer. Every hydraulic component offered by Paragon is the product of years of research and experience to produce a remanufactured product that performs as well as new. Our proven procedure provides for fast turn-around and delivery.

Paragon repairs all of the hydraulic components listed and a large number of hydraulic components in the following categories:

Cartridge Kits • Piston Motors



5775 Ten Mile Road
Warren, MI 48091
phone: (800) 229-5350
fax: (800) 229-5375
www.paragontech.com



1100 South Service Rd #103
Stoney Creek, ON, CN. L8E 0C5
phone: (800) 567-3786
fax: (800) 229-5375
www.paragoncanada.ca



2919 Interstate Street
Charlotte, NC 28208
phone: (800) 756-9150
fax: (800) 229-5375
www.paragonatlantic.com



82 Corporate Park Dr.
Henderson, NV 89074
phone: (800) 756-9160
fax: (800) 229-5375
www.paragonpacific.net

Standard Hydraulics are available for immediate exchange!

REXROTH A10VSO

A10VSO28 A10VSO100
A10VSO45 A10VSO140
A10VSO71



VICKERS PVH

PVH57 PVH98
PVH74 PVH131



VICKERS PVQ

PVQ10 PVQ20
PVQ13

VICKERS PVE

PVE12 PVE35
PVE19 PVE47
PVE21 PVE62
PVE27



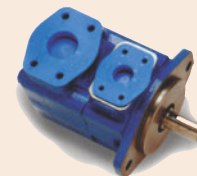
VICKERS VHO and VQ

20V2	25V12	25V14	35V38	50V100
20V5	25V14	25V17	45V42	50V109
20V8	25V17	25V21	45V50	3520V
20V11	2520V	35V25	45V60	3525V
20V12	25V21	35V30	50V72	4520V
20V14	25V12	35V35	50V85	4525V
				4535V



VICKERS PVB

PVB5 PVB29
PVB6 PVB45A
PVB10 PVB45
PVB15 PVB90
PVB20



REXROTH

Vane Pumps

1PV1V4 1PV2V4
1PV2V3 1PV6V3



Pumps/Motors

A2F/A2F0 A7F
A2V/A2VK A7V/AA7V
A3V 900CV
A4F A2FM/AA2FM
A4V/AA4V A2FE



DENISON

Vane Pumps

T1C T5DC/T6DC
T1D T5E/T6E
T2D T5EC/T6EC
T5C/T6C T5ED/T6ED
T5CC/T6CC TMB
T5D/T6D TMC



Piston Pumps

PF07 PV07
PF08 PV08
PV05 PV09
PV06



VICKERS

Combination Round Pumps

VC10 VC128
VC29 VC129
VC39 VC138
VC49 VC139
VC108 VC148
VC110 VC149



Round Pumps

V108 V2324
V109 V2325
V110 V360 to
V2304 V470
V2305 V2350
V2311 V2341
V25 V2342
V35 V2360
V45 V2361
V124 to V2362
V149 V2460
V2320 V2461
V2462



VICKERS

Small Series Round Pumps

V104 V111
V105



Bent Axis Pumps

PF2003 PV2008
PF2008 PV2012
PF2012 PV2020
PF2020
PFA 50
PFA 120
PV2003



Vane Pumps

25V 3520V
35V 3525V
45V 4520V
50V 4525V
2520V 4535V



Directional Valves

DF5S4 DG4V3
DG4S4 DG5S8



Flow Control Valves

FCG-02 FG-03
FCG-03 FG-06
FG-02 FG-10



Pressure Control Valves

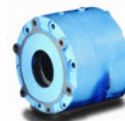
CF-16	RT-03
CG-03	RT-06
CG-06	RT-10
CG-10	XCF-16
CS-03	XCG-03
CT-06	XCG-06
CT-10	XCG-10
RCF-16	XCT-03
RCG-03	XCT-06
RCG-06	XCT-10
RCG-10	XF-16
RCT-03	XG-03
RCT-06	XG-06
RCT-10	XG-10
RG-03	XT-03
RG-06	XT-06
RG-10	XT-10



VICKERS

MHT Motors

MHT32	MHT 220
MHT 50	MHT 250
MHT 70	MHT 380
MHT 90	MHT 440
MHT 110	MHT 500
MHT 130	MHT 690
MHT 150	MHT 750
MHT 190	MHT 1000



Vane Motors

25M 45M
35M 50M



Bent Axis Motors

MF 2003	MF 2020
MF 2008	MFA 120
MF 2012	MFA 50



BOSCH/MOOG

RKP Pumps

0514-300 (16cc)	0514-700 (63cc)
0514-400 (19cc)	0514-800 (80cc)
0514-500 (32cc)	0514-900 (90cc)
0514-600 (45cc)	



BOSCH/RACINE

Piston Pumps

C-11 Dual	H-20
C-11 Single	H-80
C-4	



Vane Pumps

PVQ5 or 6/PSQ	PSV 80
PVQ5 or 6 (Dbl.)	PSV 100
PSV 10	PVF12,20,30
PSV 15	PVK 70
PSV 20	PVR 40
PSV 25	PVS 10, 12
PSV 40	PVT 25

HYDRAULIC CYLINDERS

- Milwaukee
- Parker
- Hydroline
- Miller



Plus Thousands More...

Contact: Call or email the Customer Service office nearest you 24 hours a day. With a few simple questions we can begin the process of completing your repair or replacement. You can also fill out an on-line form on any of our web sites that is forwarded directly to our Customer Service department. If we can exchange controls a quote is generated immediately.

Ship: Send the repair in for service, or if a local sales office is nearby it may be quicker for us to come and pick up the item. If not, we can help you find the best method to get the repair into the right Paragon facility.

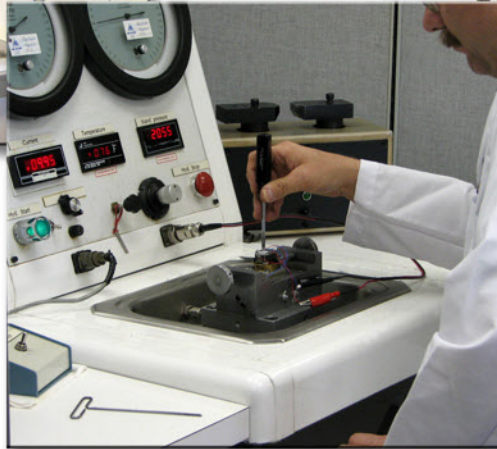
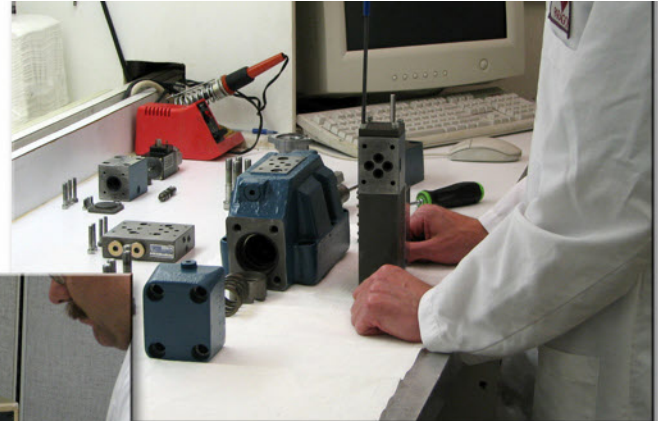
Evaluation: Once logged into our system with a "lifetime" ID number, your product moves to the appropriate department for initial evaluation and quoting of the repair.

Quote/Approval: A cost quote for the repair is generated instantly and sent to you via the Internet or by fax. You can approve the repair by email, fax, or a call to customer service along with your company purchase order number or credit card.

Repair/Return: Once your product is repaired and tested, it is foam packaged and/or static bagged and returned via the method you designate, expedited or regular ground.

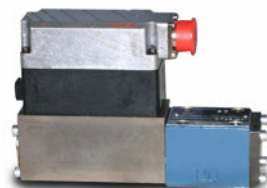
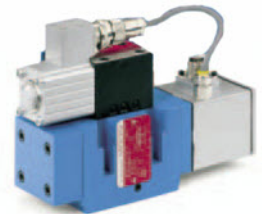
Invoicing: If credit is established, the invoice is generated the following day or your company credit card is billed. Open credit terms are net 30 with 1% discount at 10 days.

SERVO VALVE REPAIR



PROCEDURES FOR SERVO VALVE REPAIR

- Visual inspection and evaluation on test stand for initial comparison to manufacturer's specifications.
- Valve is disassembled.
- Every part is chemically cleaned with solvents.
- Torque motor is dismantled down to wires and magnets.
- All parts are inspected and checked to ensure they are within manufacturer's tolerances and specifications.
- Failed parts are replaced with original manufacturer components.
- Torque Motor is totally remanufactured.
- Each magnet is re-magnetized to full strength.
- All nozzles are adjusted.
- Feedback wire is checked for wear and performance.
- Motor is rewired and assembled with new Viton Seals.
- Torque motor is then tested and calibrated to manufacturer's specifications.
- Valve Body is inspected to ensure it is within manufacturer's tolerances.
- Body spool assembly is checked for wear.
- If needed the body and/or body spool assembly is replaced with new from the original manufacturer, assembled using new Viton seals and a new filter from the valve manufacturer.
- The torque motor and body are reassembled, tested to 100% of specifications for flow and pressure established by the manufacturer.
- Once tested to manufacturer's specifications, a test report and computer plot is included with the repair.



5775 Ten Mile Road
Warren, MI 48091
phone: (800) 229-5350
fax: (800) 229-5375
www.paragontech.com



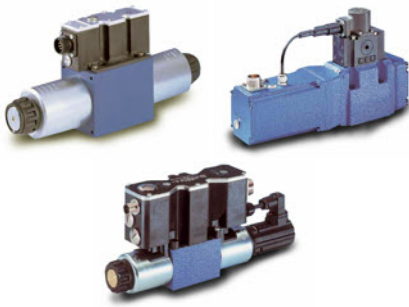
1100 South Service Rd #103
Stoney Creek, ON, CN. L8E 0C5
phone: (800) 567-3786
fax: (800) 229-5375
www.paragoncanada.ca



2919 Interstate Street
Charlotte, NC 28208
phone: (800) 756-9150
fax: (800) 229-5375
www.paragonatlantic.com



82 Corporate Park Dr.
Henderson, NV 89074
phone: (800) 756-9160
fax: (800) 229-5375
www.paragonpacific.net



REXROTH

4WS2EM10	4WRA
3DREP6	4WRAE
4WRDE	4WRE
4WRE10	4WREE
DBETR	4WREDE
FE Series	3DREP
4WRK	3DREE
4WRKE 10-35	3DS2EH
Series	3DSE2EH
4WRTE	



PEGASUS

120	132	162
121	140	180
122	142	1160
130	160	1282
131	161	

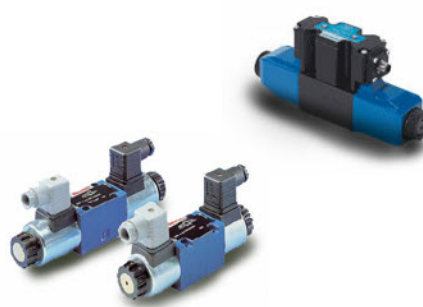


ATCHLEY

205	211	230
206	214	231
207	215	240
208	218	241
209	225	242

DYNAMIC

1	10	15
5	12	25



BOSCH

(Directional Control)	(Pressure Control)
NG6	NG6
NG10	(Throttle Valve)
NG16	NG6
NG25	NG10
NG32	



MOOG

62-1xx	656
62-3xx	660 - 665
631-xxx	D761
72-xxx	D769-xxx
73-xxx	79-1xx
76-xxx	79-2xx
A076-xxx	D079
760-xxx	765
77-xxx	88
78-xxx	631
79-30x	691
641	D791
642	D792
643	
644	Servoactuators
645	A085
650	856
651	853
652	

ABEX

410	415	425	450
-----	-----	-----	-----

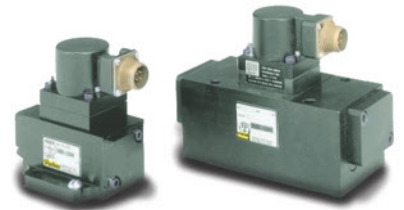


VICKERS

SM4-10	(Pressure Control)
SM4-15	EHST
SM4-20	CGE-02
SM4-40	CGE-06
	CGE-10

SUNSTRAND

MCV 101	MCV 105
MCV 102A	MCV 110
MCV 103	MCV 116
MCV 104	



PARKER

BD15	DY
BD30	EHD
D111	PC1
D1	PC2
D3	PE1
D4	PE2
D8	PE3
D9	PH
DW	TDA



OILGEAR

VSC4-R03	VSC4-R05
VSC4-R04	VSC4-R07

Contact: Call or email the Customer Service office nearest you 24 hours a day. With a few simple questions we can begin the process of completing your repair or replacement. You can also fill out an on-line form on any of our web sites that is forwarded directly to our Customer Service department. If we can exchange controls a quote is generated immediately.

Ship: Send the repair in for service, or if a local sales office is nearby it may be quicker for us to come and pick up the item. If not, we can help you find the best method to get the repair into the right Paragon facility.

Evaluation: Once logged into our system with a "lifetime" ID number, your product moves to the appropriate department for initial evaluation and quoting of the repair.

Quote/Approval: A cost quote for the repair is generated instantly and sent to you via the Internet or by fax. You can approve the repair by email, fax, or a call to customer service along with your company purchase order number or credit card.

Repair/Return: Once your product is repaired and tested, it is foam packaged and/or static bagged and returned via the method you designate, expedited or regular ground.

Invoicing: If credit is established, the invoice is generated the following day or your company credit card is billed. Open credit terms are net 30 with 1% discount at 10 days.