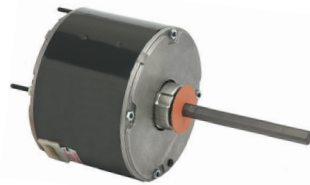


HVAC Product Line Overview *(continued on back)*

Condenser Fan Motors

Standard Condenser Fans

- Single and Three Phase
- 1/10–2 HP
- 1725, 1625, 1550, 1075 and 825 RPM
- Single and two speed



MOJAVE® Series Condenser Fans

- Motors suited for a warmer climate
- Single and two speed
- 1/4–3/4 HP
- Sleeve Bearing
- 70°C Ambient Design



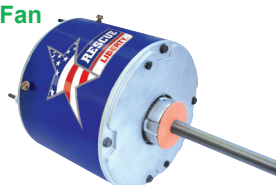
RESCUE® Condenser Fan Motors

- Replaces a variety of different HP applications
- Multi-Horsepower
- 1/3–1/6 HP or 1/2 to 1/5 HP
- 1075 RPM, 48 Frame



RESCUE™ LIBERTY Condenser Fan

- Made in the USA
- 1/3–1/6 HP
- 1075 or 825 RPM/two speeds
- 208-230V
- Open Air Over (OAO)



PEP® High Efficiency Condenser Fan Motor

- 76% Efficient Single Phase PSC, High Ambient
- Up to 1/2 HP in 1075 & 825 RPM
- 48 Frame, TEAO, Ball Bearing
- 70°C / 158°F, 50/60 Hz Rated



VariTough® Motors Commercial Condenser Motors

Designed for Inverter Duty, multiple motor environment

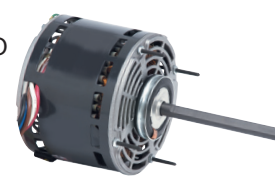
- 1/2–2 HP
- 575, 825, 850, 1140 RPM
- 56YZ Frame, ODP, Shaft Up Design
- 70°C / 158°F max ambient



Fan and Blower Motors

Standard Fan and Blower

- Single Phase, ODP, OAO and TEAO
- 1/6–1-1/2 HP
- 3450, 1725, 1075 and 825 RPM
- Single, two, three and four speed
- Belt drive and direct drive



RESCUE EcoTech® High Efficiency Direct Drive Blower

- Drop in replacement for PSC Direct Drive Commercial and Residential Air Handlers and Furnaces
- Multi-Horsepower
- Up to 82% Efficient
- 1/4–1 HP
- 1075 RPM, 48 Frame



RESCUE® Select™ Motors

- The ECM aftermarket motor that replaces OEM constant torque blower motors!
- 1/3, 1/2, 3/4, 1 HP
- 115 or 208-230V
- 600–1200 RPM — Up to 5 speeds
- Open Air Over (OAO)



RESCUE™ LIBERTY Furnace and Air Handler Direct Drive Blower

- Made in the USA
- 1/3–1/6 HP
- 1075 RPM/4 speeds
- 115 or 208-230V
- Open Air Over (OAO)



Other Applications

RESCUE® ECM Watt Motor

- Refrigeration Evaporator and Condensing Applications
- 4 to 25 Watts
- 1550 to 1725 RPM
- TEAO
- Rated IP66 – Endure High Pressure Water Jets



Evaporative Cooler

- Single Phase, ODP
- 1/3–1 HP
- 1725 RPM
- 56 Frame
- Single and two speed
- Corrosion resistant rotor core and actuator assembly



HVAC Product Line Overview *(continued)*

Unit Heater

- Single Phase, TEAO
- 1/15–3/4 HP
- 1550 and 1075 RPM
- 48 and 56 Frame
- Cradle and stud mount



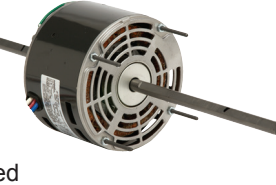
Air Circulator Motors

- Single Phase, OAO and TEAO
- 1/4–1/2 HP
- 1800, 1200, 1100, 1075 and 900 RPM
- 48 Frame
- Single and two speed options
- Non-oscillating



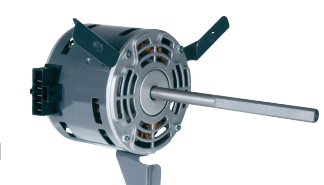
Fan Coils

- Single Phase, OAO and TEAO
- 1/10–3/4 HP
- 1725 and 1075 RPM
- 42 and 48 Frame
- Single, two, three, four and five speed
- Automatic reset thermal overload protector



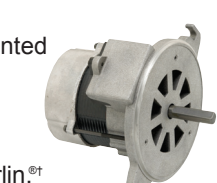
PSC Packaged Terminal A/C Heat Pump Motors

- Single Phase, OAO
- 1/30–3/4 HP
- 1625, 1050, 1100 and 925 RPM
- 5.0", 5.6" and 6.3" diameter
- Single, two, three and four speed



Oil Burner

- Single Phase, Totally enclosed when mounted
- 1/8–1 HP
- 3450 and 1725 RPM
- 48 and 56 Frame
- Direct OEM replacement for Beckett®, Carlin®, Ducane® and Wayne® Home Oil Burner Systems



RESCUE® 3.3 Refrigeration Evaporator Motors

- OAO and TEAO
- Dual cord for OEM connection
- Reversible PSC designs
- Reversibility reduces SKUs to stock



eBusiness Solutions

State-of-the-art eBusiness systems that offer real-time solutions. Whether you need to check stock availability or need detailed specifications, you can access online information anytime, anywhere.

MotorBoss® Product Information Resource

24/7, 365 days a year availability. This easy-to-use system provides you real-time answers quickly. For more information, go to www.motorboss.com.

eCatalog

Using eCatalog makes it easier and faster than ever to find the right motor to meet your needs. eCatalog provides details on all U.S. MOTORS® brand stock motor ratings. For more information, go to www.usmotors.com/default_ecatalog.htm.

MotorPro® App

The MotorPro® app allows you to find a comparable U.S. MOTORS® product using our competitive cross reference tool, search hundreds of electric motor terms and definitions with the motor glossary and access product data quickly and easily. You can also learn what your energy efficiency payback will be when you upgrade to NEMA Premium® motors. Search **MotorPro** in the App store.

MotorPro® Training

MotorPro® is a self-paced, interactive online electric motor training tool. After you complete MotorPro training, we will send you a certificate of completion. Sign on today at www.usmotors.com/motorpro to become a motor professional!

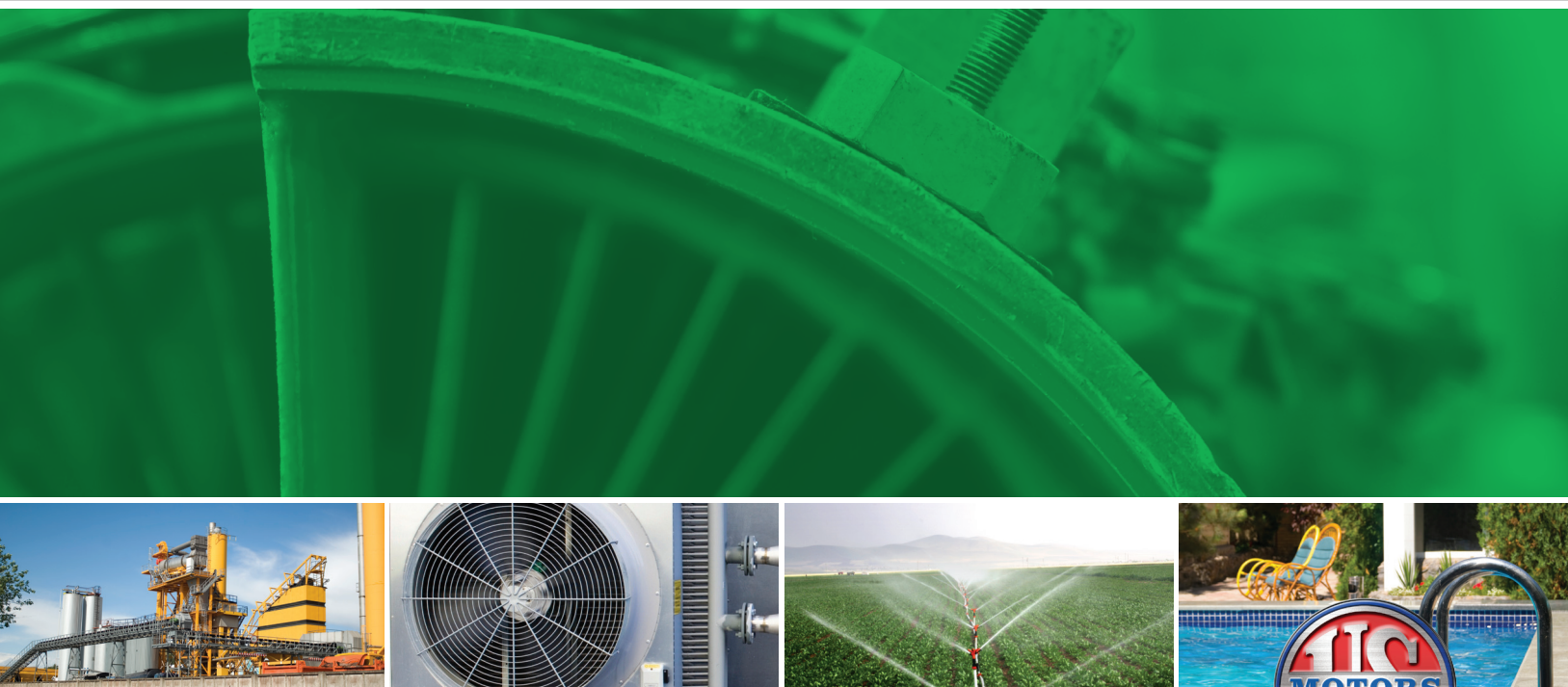


8050 W. Florissant Avenue | St. Louis, MO 63136
Phone: 888-637-7333 | Fax: 866-422-7758
www.nidec-motor.com | www.usmotors.com

Nidec Motor Corporation, © 2013, All Rights Reserved.
U.S. MOTORS® is a registered trademark of Nidec Motor Corporation.
Nidec Motor Corporation trademarks followed by the ® symbol are registered with the U.S. Patent and Trademark Office.

FLB/2013 Rev. 12/13

Full Line Product Overview



HVAC MOTORS

GENERAL PURPOSE MOTORS

DEFINITE PURPOSE MOTORS

SPECIAL PURPOSE MOTORS



[†]All marks shown within this document are properties of their respective owners.

General Purpose Industrial Motors

Three Phase, TEFC, HOSTILE DUTY™

- 1–350 HP
- 3600, 1800, 1200 and 900 RPM
- 143–449 Frame
- Energy and NEMA Premium® efficient
- Cast iron frame and brackets
- Ball and roller bearing options



NEMA Premium

Three Phase, TEFC, CORRO-DUTY®

- 1–400 HP
- 3600, 1800 and 1200 RPM
- 143–449 Frame
- All cast iron construction
- NEMA Premium® efficient
- Ball and roller bearing options



NEMA Premium

Three Phase, TEFC, 841 PLUS®

- 1–400 HP; All cast iron frame and brackets
- 3600, 1800 and 1200 RPM
- 143–449 Frame
- VBXX® bearing isolators by Inpro/Seal® helps protect bearings
- Meets IEEE® 841 GM7E-TA specifications
- Five-year limited warranty*
- NEMA Premium® efficient



NEMA Premium

Hazardous Location

- Single and Three Phase, TEFC
- 1/4–150 HP
- 3600, 1800, 1200 and 900 RPM
- 56–445 Frame
- Energy and premium efficient
- Class I, Group D; Class I, Groups C and D, and Class II, Groups E, F, and G



NEMA Premium

Three Phase, TEFC, UNIMOUNT® and STEEL EDGE®

- 1/4–30 HP
- 3600, 1800, 1200 and 900 RPM
- 56–286 Frame
- Energy and NEMA Premium® efficient
- C-Face, Footed and Footless and removable base



NEMA Premium

A Variety of Conversion Options Available to Maximize Stock Flexibility

When quick deliveries are required on customized motors, our expansive inventory can be customized to provide special features. Our experienced Factory Technicians specialize in stock motor modifications to offer a speedy response to customer needs. Conversion Centers are located in Southaven, MS and Los Angeles, CA.

Three Phase, ODP

- 1/4–400 HP
- 3600, 1800, 1200 and 900 RPM
- 48–449 Frame
- Energy and NEMA Premium® efficient



NEMA Premium

C-Face: ODP, TEFC and Hazardous Location

- Single Phase, Split Phase and Capacitor Start
- Three Phase, Footed and Footless options
- 1/12–60 HP
- 3600, 1800 and 1200 RPM
- 56–326 Frame; TEFC to 400 Frame
- Standard, Energy and Premium Efficient



Single Phase, Split Phase, ODP and TEFC

- 1/12–3/4 HP
- 3600, 1800, 1200 and 900 RPM
- 48–56 Frame
- Rigid welded and cradle bases
- Single and two speed options
- C-Face Footed and Footless
- Automatic or manual reset thermal overload protector options



Single Phase, Capacitor Start, ODP and TEFC

- 1/8–10 HP
- 3600, 1800 and 1200 RPM
- 48–215 Frame
- Rigid welded and cradle bases
- C-Face Footed and Footless
- Automatic or manual reset thermal overload protector options



TITAN® Horizontal

- Three Phase, ODP, WPI, WPIL, TEFC and Hazardous Location
- 150–4000 HP
- 3600, 1800, 1200, 900, 720 and 600 RPM
- 449–9608 Frame
- 460–6900 Volts
- Ball or sleeve bearings available



Definite Purpose Motors

Vector Duty

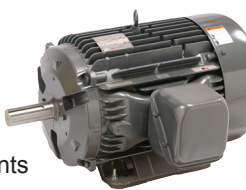
- Three Phase, TENV and TEBC
- 1–15 HP (TENV)
- 1–300 HP (TEBC)
- 143–449 Frame
- 0–1800 RPM
- Constant torque near zero RPM
- Three-year limited warranty on inverter power†



ACCU-Torq® 2000:1 Constant Torque

Inverter Duty

- Three Phase, ODP and TEFC
- 1–200 HP
- 3600, 1800 and 1200 RPM
- 143–447 Frame
- Meets NEMA® MG1 Part 31 requirements for inverter duty



Hot Water Circulator Pump

- Single and Three Phase, ODP
- 1/12–1-1/2 HP
- 1800 RPM
- 48 and 56 Frame
- Direct replacement motor for B&G® (Bell & Gossett), Taco® and Thrush™† brand circulator pumps



Carbonator Pump

- Single Phase, ODP
- 1/4–1/2 HP
- 1800 RPM
- 48 Frame



Air Compressor

- Single Phase, ODP
- 1/2–5 HP
- 3600 RPM
- 56, 143 and 184 Frame
- High breakdown torque



Gate and Door Motors

- Single and Three Phase, ODP and TEFC
- 1/3–1 HP
- 1800 RPM
- 56 and 56C Frames



Brake Motor

- Three Phase, TEFC with Brake Added
- 1/3–20 HP
- 1800 and 1200 RPM
- 56–256 Frame
- Rigid base, C-Face, Footed and Footless



Farm Duty

- Single and Three Phase, TEFC
- 1/8–10 HP
- 3600 and 1800 RPM
- 56–215 Frame
- High torque or extra high torque



Automotive Duty, U-frame

- Three Phase, TEFC
- 1/4–300 HP
- 3600, 1800, 1200 and 900 RPM
- 56–5008 Frame
- Meets General Motors® GM-7EQ & GM-7EH, Ford® EM1, and Chrysler® NPEM-105 spec



NEMA Premium

Fire Pump Motor

- Three Phase, ODP
- 7-1/2–500 HP
- 3600 and 1800 RPM
- 184–449 Frame
- UL® listed for fire pump application
- Available in horizontal frame and vertical JP close couple pumps



Commercial and Residential Water System Pumps

- Single and Three Phase, ODP and TEFC
- 1/3–3 HP
- 3600 and 1800 RPM
- 48 and 56 Frame
- C-Face, square flange
- Footed and Footless



Pool and Spa Motor

- Single and Three Phase, ODP
- 1/2–5 HP
- 3600 RPM
- 48 and 56 Frame
- Thru-bolt, C-Face and square flange
- UL® 1081, 1795 and 1563 design



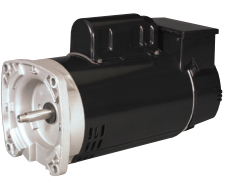
ECOTECH EZ® Variable Speed Motor and Control

- 6.5" Frame Diameter; 56J C-Face or 56Y Square Flange frame
- 3 HP, Variable RPM; Category J
- Freeze Sensor
- Fully integrated motor control



2EZ® Speed Motor and Control

- 6.5" Frame Diameter; 56J C-Face or Square Flange
- 3/4–2 HP; 3450/1725 RPM
- Freeze Sensor
- Fully integrated motor control



Special Purpose Motors

Vertical Pump Motors

- Three Phase, WPI, WPIL, TEFC and Hazardous Location
- 3–4000 HP
- 3600, 1800, 1200, 900, 720, 600 and 514 RPM
- 182–9608 Frame
- Designed for high or normal thrust
- Available in Vertical HOLLOSHAFT® and Vertical Solid Shaft



Close Coupled Pump

- Single and Three Phase, ODP, TEFC and Hazardous Location
- 1–60 HP
- 3600 and 1800 RPM
- 143–326 Frame
- JM and JP shafts available
- Energy and NEMA Premium® Efficient



Elevator Duty

- Single and Three Phase
- Submersible and Dry Hydraulic
- 3–75 HP
- 3600, 1800 and 1200 RPM
- Z and L32 flange mounting



Cooling Tower

- Three Phase, TEFC and TEO
- 2–100 HP
- 1800, 1200, 1800/900 and 1200/600 RPM
- 145–447 Frame
- Single and two speed
- NEMA Premium®/inverter duty
- Replacement for Baltimore Aircoil Company®, Evapco® and SPX Cooling Technologies (Marley®)
- Stock Ratings Available
 - TEFC 3-40HP@1800 RPM
 - TEO 5-50HP@1800 RPM



NEMA Premium

Painted Washdown

- Single and Three Phase, TEFC
- 1/2–10 HP
- 3600, 1800 and 1200 RPM
- 56–215 Frame
- Foot mounted, C-Face Footed and Footless
- Compliant with EISA Standards



Paint-Free Washdown

- Three Phase, TENV
- 1/2–10 HP
- 1800 RPM
- 56–215TC Frame
- VBX® bearing isolators by Inpro/Seal®
- Inverter Duty
- Compliant with EISA Standards



Stainless Steel Washdown

- Three Phase, TENV and TEFC
- 1/2–10 HP
- 3600 and 1800 RPM
- 56HC–215TC Frame
- All stainless steel construction
- Rust inhibitor on stator and rotor
- Compliant with EISA Standards



All high performance motors carry a nameplate including a NEMA Premium® trademark and European IE efficiency marks, providing a clear means for both users and OEM's to determine global regulatory compliance for their application. In addition to a full line of horizontal motors, the U.S. MOTORS® line of vertical motors are available at premium efficiency levels to address customer requirements.

U.S. MOTORS® is a registered trademark of Nidec Motor Corporation. For more information about the U.S. MOTORS® brand visit www.nidec-motor.com or www.usmotors.com.

†All marks shown within this document are properties of their respective owners.
*For details, refer to: www.usmotors.com